

DEFINING QUALITY

Hudak

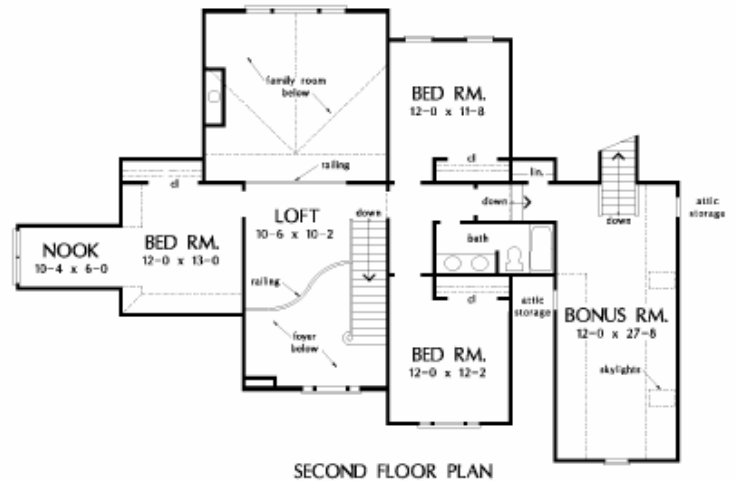
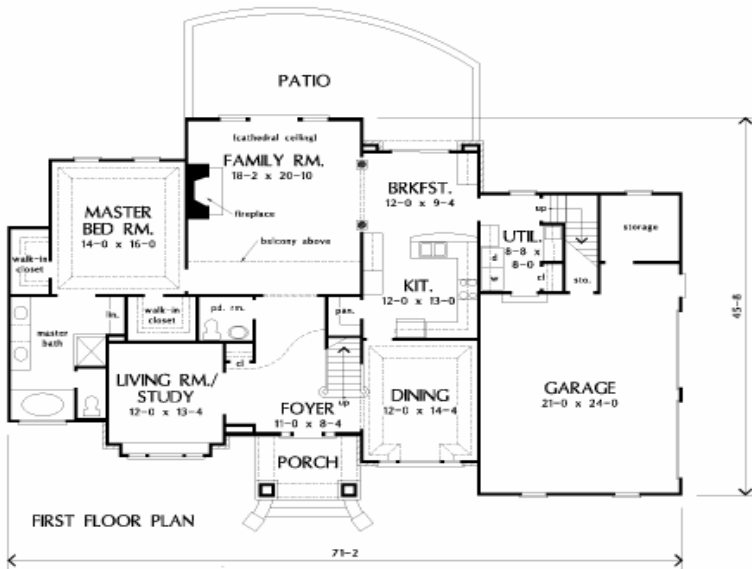
Custom Builders, Inc.

Trudeau

Total living:	2,807 s.f.
First floor:	1,904 s.f.
Second floor:	903 s.f.
Bonus room:	434 s.f.
Bedrooms:	4
Baths:	2-1/2
House:	71 x 45

Built on your lot: \$285,600

Prices subject to change



Copyright 1998-2004 Donald A. Gardner Interactive, LLC. All rights reserved.

420 N. Court Street
 Medina, OH 44256
 Office: 330-721-2309 Fax: 330-723-5953
www.HudakCustomBuilders.com

Standard Features

Basement

- 12 course 12-inch block with poured cores
- Tuff-N-Dry waterproof with a thirty-year warranty
- Minimum 36-inch premium stone fill over footer drains
- 4-inch concrete floor with vapor barrier
- Interior and exterior drain tile system

Fireplace

- Direct vent gas fireplace with logs
- Wood mantel and frame to match trim package
- Sealed unit with exterior combustion air

Structure

- 2x10 floor joists
- 2x4 walls 8-foot tall
- ¾-inch T&G Edge Gold floors glued and nailed to joists (50-year warranty)
- Steel support beams and posts
- Tyvek house wrap for air infiltration
- ½-inch OSB sheathing on exterior walls and roof
- Vinyl double-hung windows (tilt for cleaning)

Plumbing

- Flow Guard Gold supply lines
- Moen lever faucets
- Cultured marble vanity tops with sink bowls
- Mansfield low consumption toilets
- Maax Aker fiberglass tub and shower enclosures
- Cultured marble garden tubs
- Double-bowl stainless steel kitchen sink
- Hot and cold water in garage
- Two exterior hose bibs
- Exhaust fans in all baths
- 50-gallon 90%+ efficient gas hot water tank
- Shower door enclosures

Electrical

- 50-foot underground electrical service 200-amp
- Recess lights on fireplace
- Ceiling light fixtures in all bedrooms
- Four television and phone jacks
- Electric outlet in garage
- Exterior light at all doors
- Electric battery backup smoke detectors (each floor & bedroom)
- House custom-wired to owners' preference

Heating & Cooling

- Trane gas 90+% efficiency furnaces
- Trane XE1300 air conditioners
- Dryer vented to exterior

Insulation

- Walls R-13 fiberglass batt insulation
- Ceilings R-30 fiberglass insulation
- Attic ventilation to control moisture and heat build-up

Exterior

- Vinyl siding and soffits (stone as per plans)
- Aluminum fascia gutters and downspouts
- Raised panel steel insulated overhead garage doors
- Overhead door garage door opener with two transmitters
- Steel six-panel insulated exterior doors with dead bolts
- 30-year fiberglass shingles with 15# felt paper
- Drip edge on all eaves
- Ice and water shield to prevent potential build-ups
- Garage concrete is reinforced and includes floor drains
- 70-foot concrete drive
- Concrete service walk to front door
- Exterior concrete is reinforced and sealed to protect against weather elements
- Exterior stone front elevation

Interior

- Custom milled woodwork (painted)
- Six-panel interior doors (painted)
- Custom-built Kitchen and Bath cabinets
- ClosetMaid shelving
- Custom-crafted Foyer staircase with open balusters and rails
- Brushed nickel interior door levers with privacy locks
- Owner custom selection of interior colors
- Owners' personal selection of high-quality flooring, custom lighting, designer appliances, and décor countertops

OPTIONAL FEATURES

- Seamless steel siding
- Wood columns in Dinette
- Cathedral ceilings or tray ceilings
- Jacuzzi jet tub in Master Bath
- Bonus Room
- Loft area on second floor
- Copper roof
- Rear deck
- Cabinets in Laundry Room
- Chair rail & crown moldings
- Over-sized garage
- French doors in Family Room
- Custom shower in Master Bath

General

- Will build from your plan or ours
- Custom design a home specifically for your family
- Exclusive one-year warranty on all labor
- Will build on your lot or ours